



**National and
Kapodistrian
University of
Athens**



LOUKAS CHATZIS

Academic fellow, Department of Pathophysiology, Laiko general hospital

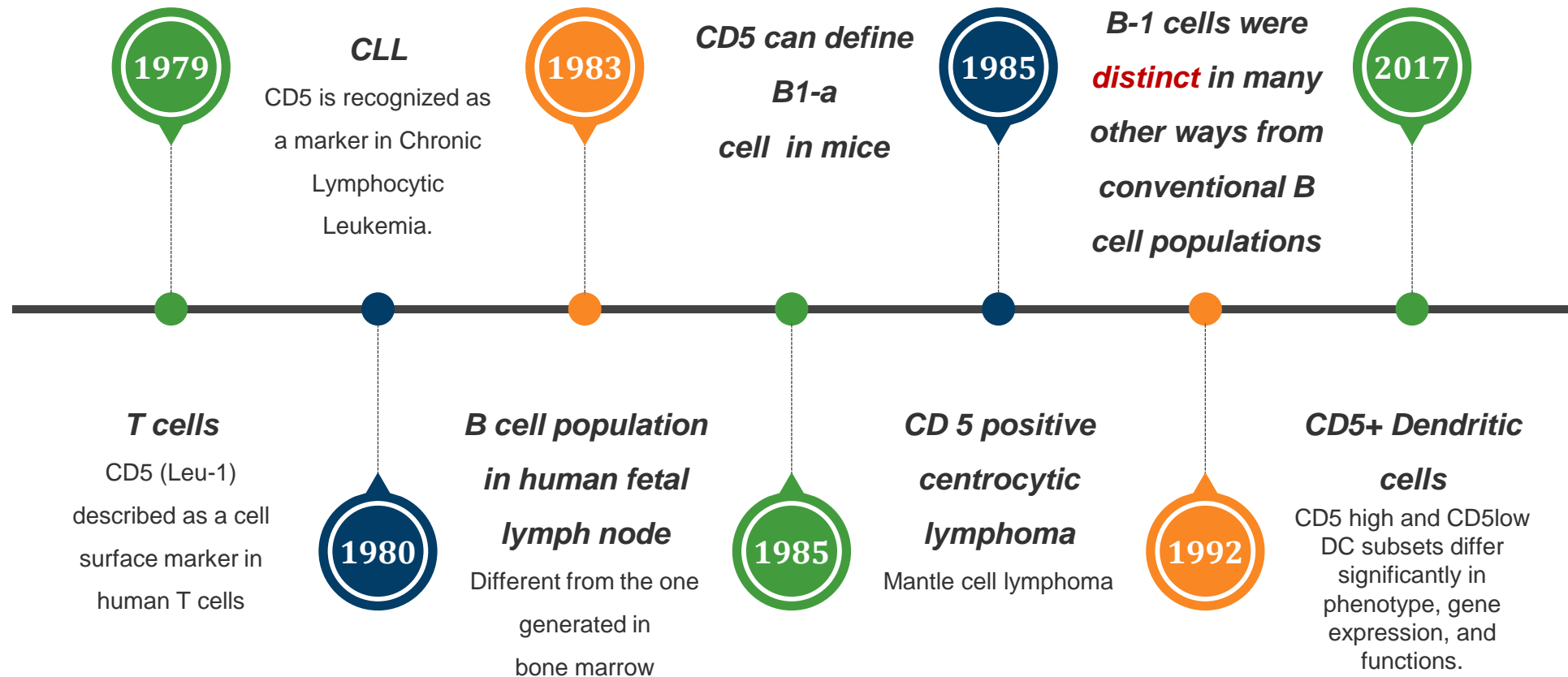
Κυτταρική έκφραση του υποδοχέα CD5 στα Β κύτταρα

Χατζής Λ., Patrice H., Γουλές Α., Καψογεώργου Ε., Scuille V., Jacques-Olivier P., Τζιούφας Α.



Crete 2022

Milestones of CD5 history





SLE

vs

CONTROL

n=10/time point

n=5/time point

Collection
time points [weeks]



BAYER

MRL/lpr

MRL/J

NZB/W

NZW

UCL

Sle123

C57/BI6

FPS

BXSB. Yaa

BXSB

TLR7.Tg

C57/BI6



Lupus mice ($n=10$)
controls ($n=5$)

Collection time points [weeks]

6

12

16-18

20-28

URINE



CLINICAL CHEMISTRY

CREATININ
ALBUMIN
ALL

BLOOD



FLOW CYTOMETRY

ALL
ANALYSIS FPS

SPLEEN



TRANSCRIPTOMIC

BAYER

KIDNEY



PROTEOMIC

CING

SEROLOGY

- cytokines
- auto antibodies

FPS

CyToF

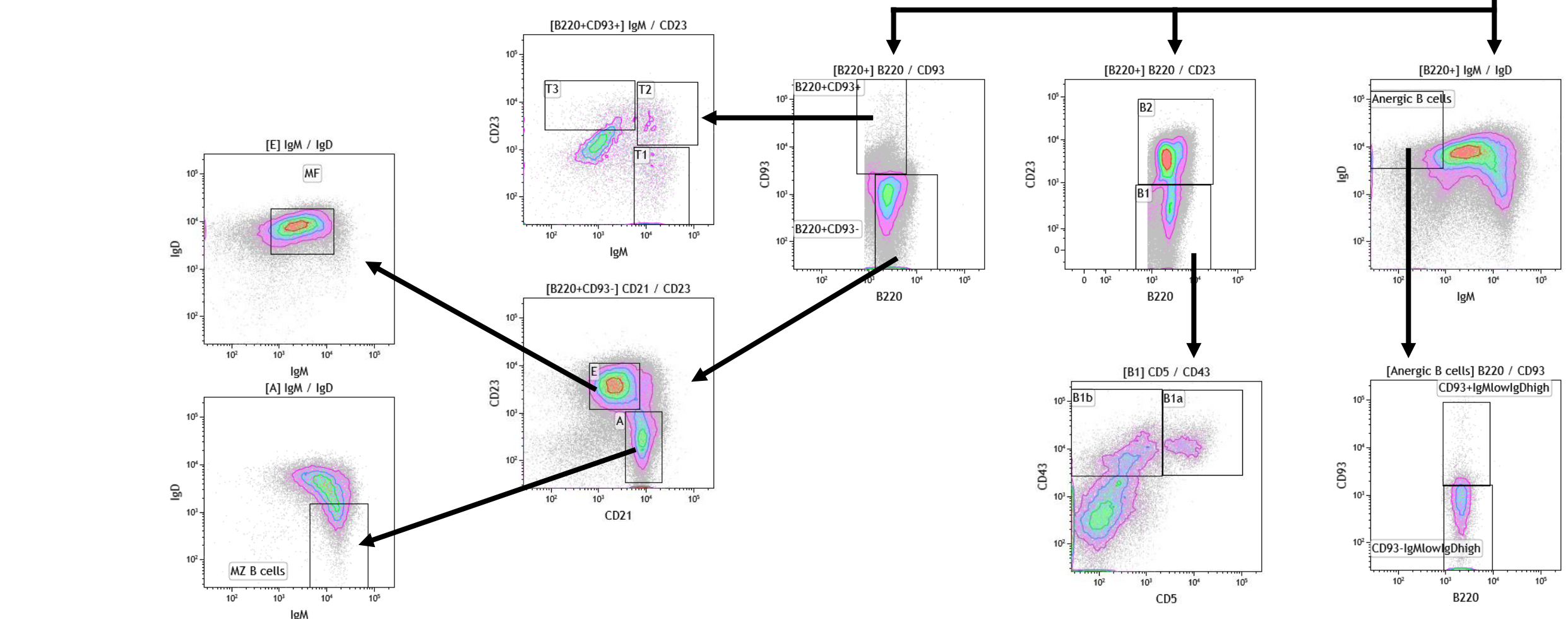
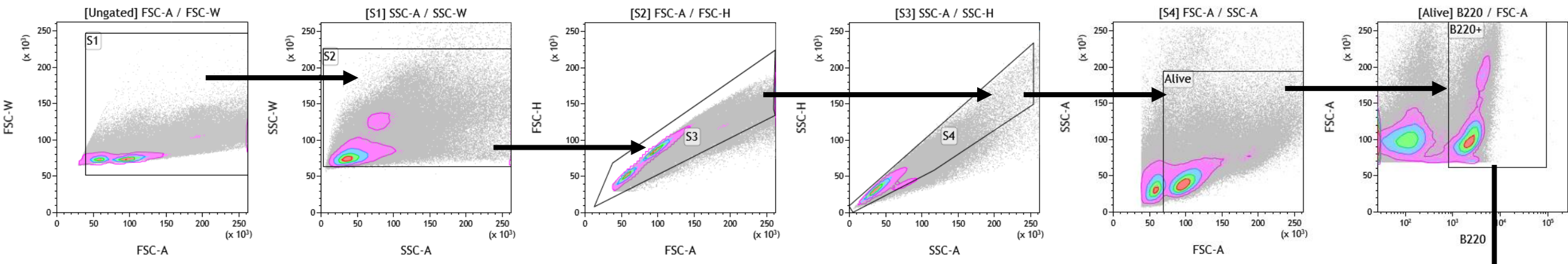
Sample collected

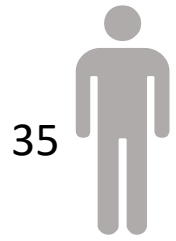
FPS

HISTOLOGY

H&E : **ATRYs**

IHC: **UCL**





35

Systemic Lupus Erythematosus



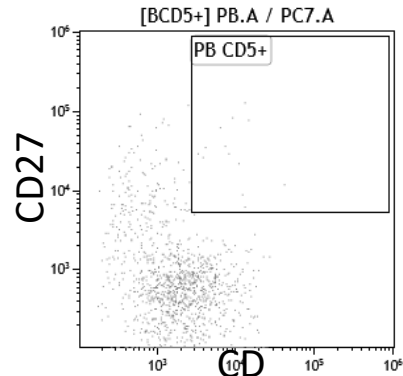
35

Sjogren's Syndrome

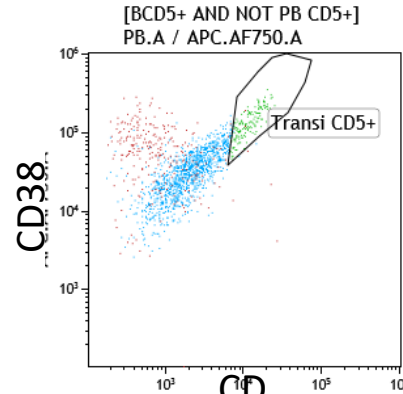


35

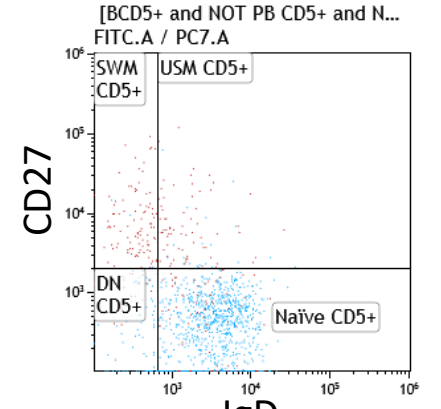
Systemic Scleroderma



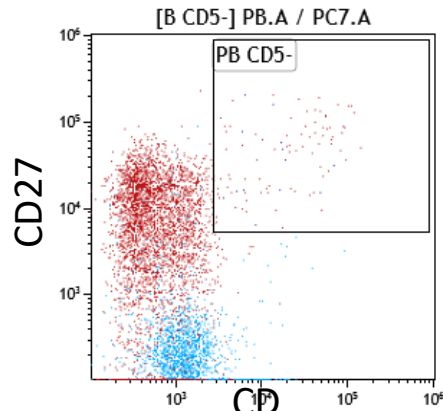
Gate	Number	%Total	%Gated
All	1 626	0.39	100.00
PB CD5+	13	0.00	0.80



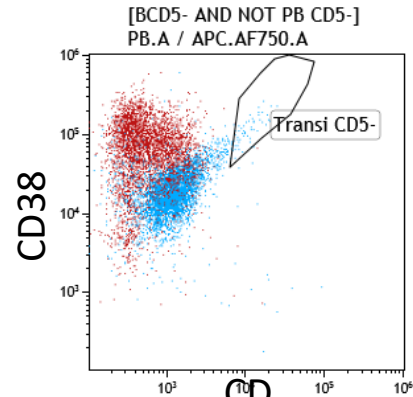
Gate	Number	%Total	%Gated
All	1 613	0.38	100.00
Transi CD5+	154	0.04	9.55



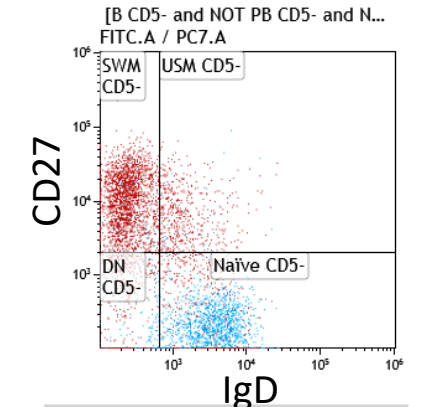
Gate	Number	%Total	%Gated
All	1 459	0.35	100.00
DN CD5+	98	0.02	6.72
Naive CD5+	1 167	0.28	79.99
SWM CD5+	100	0.02	6.85
USM CD5+	94	0.02	6.44



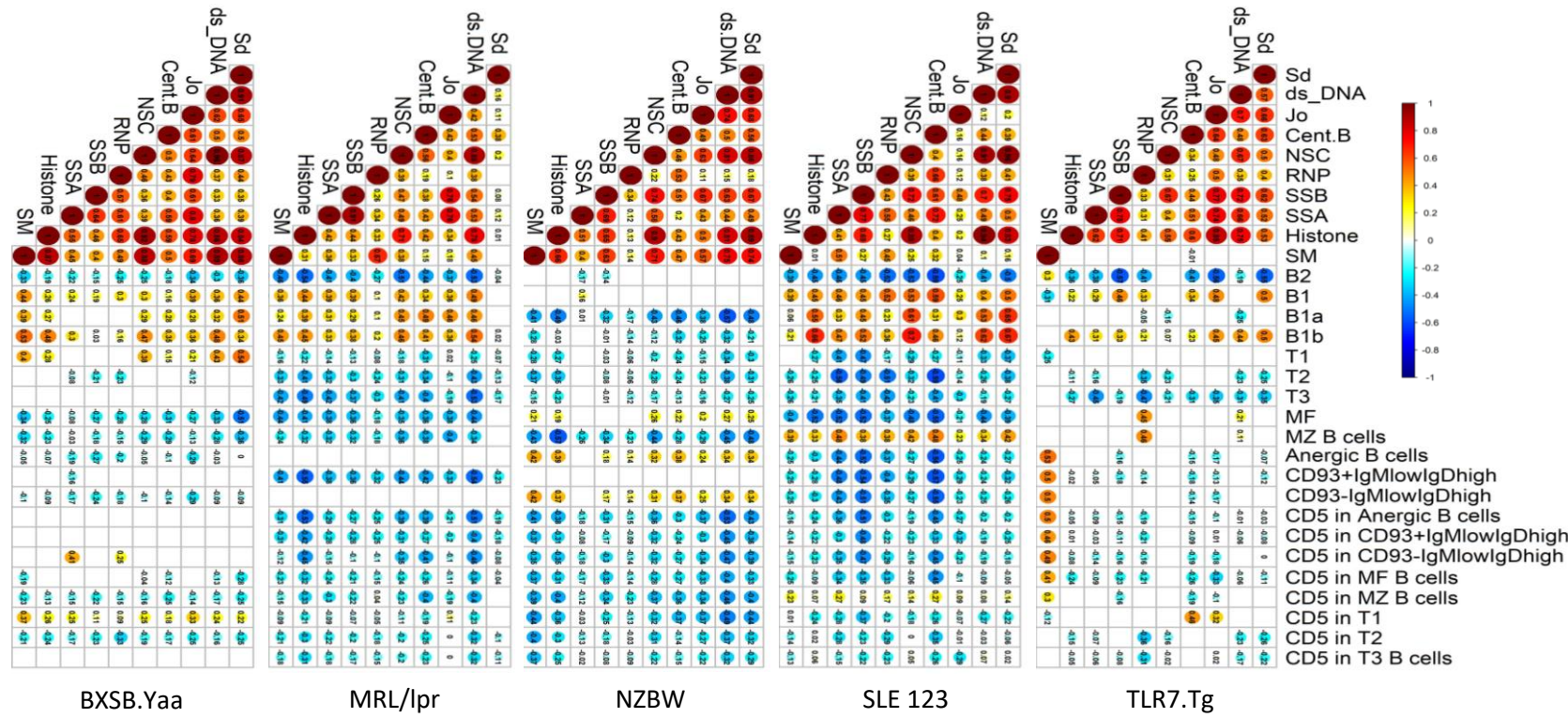
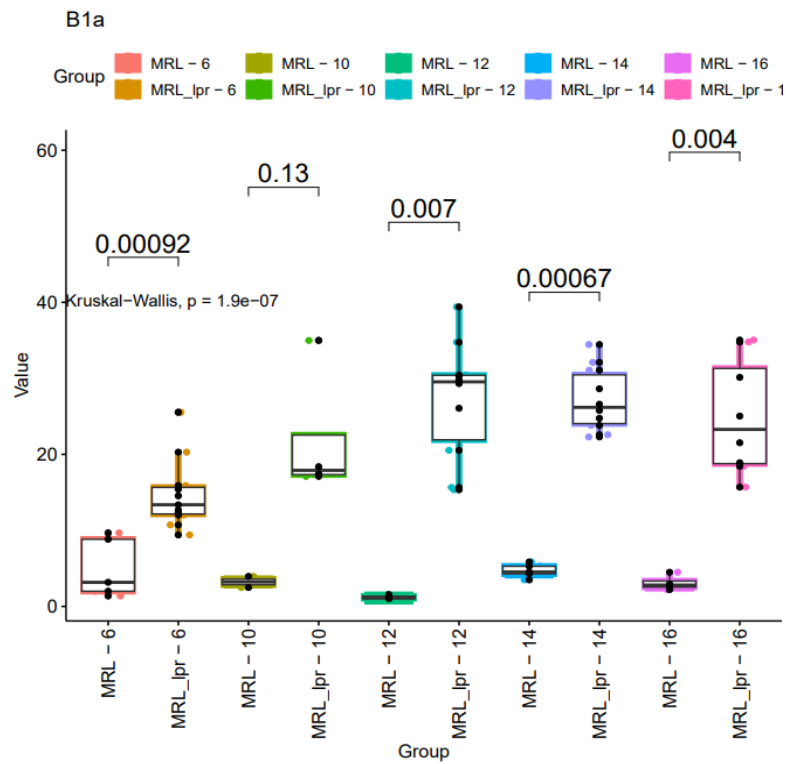
Gate	Number	%Total	%Gated
All	8 416	2.00	100.00
PB CD5-	98	0.02	1.16



Gate	Number	%Total	%Gated
All	8 318	1.98	100.00
Transi CD5-	53	0.01	0.64



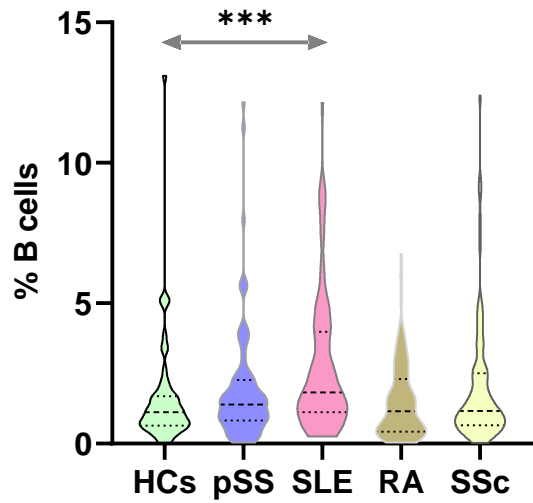
Gate	Number	%Total	%Gated
All	8 265	1.96	100.00
DN CD5-	680	0.16	8.23
Naive CD5-	4 796	1.14	58.03
SWM CD5-	2 238	0.53	27.08
USM CD5-	551	0.13	6.67



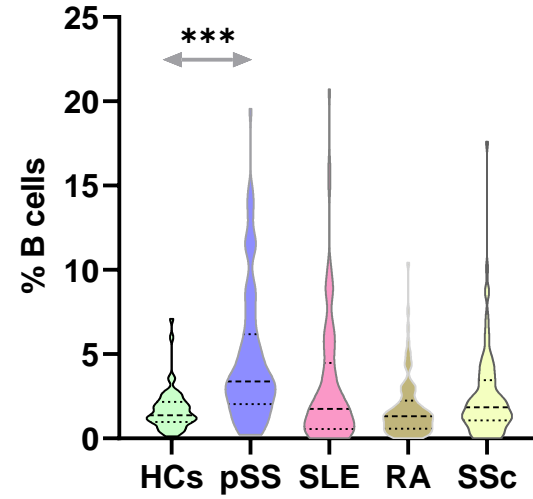
Τα B1a(B220+,CD23+,CD5+) λεμφοκύτταρα εμφανίζονται αυξημένα στο μοντέλο MRL/lpr,

Ο πληθυσμός B1a εμφάνισε θετική συσχέτιση με την παρουσία αυτοαντισωμάτων στα μοντέλα MRL/lpr, SLE 123 και BXSb.Yaa

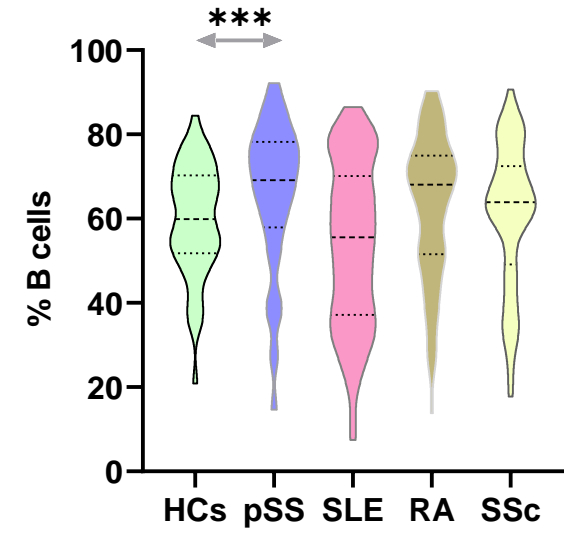
Plasmablasts



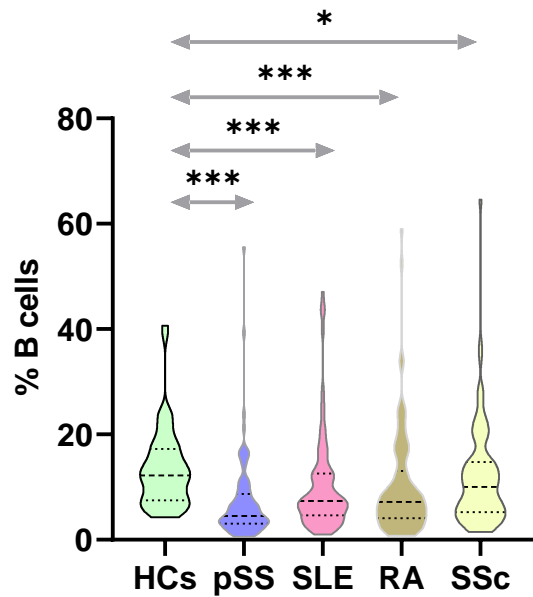
Transitional



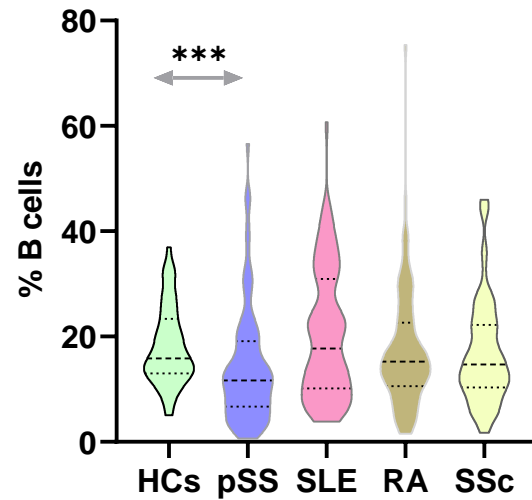
Naive



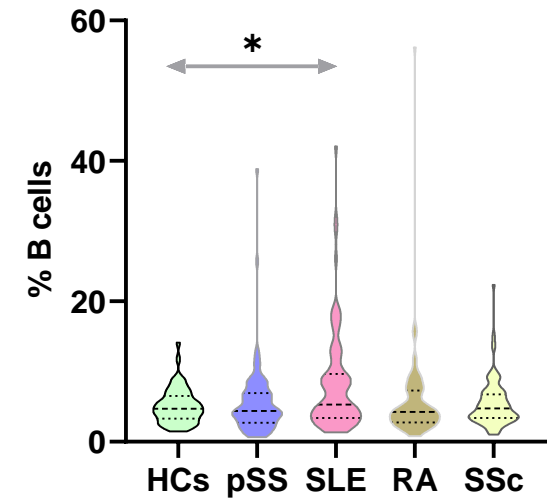
Unswitched Memory cells



Switched Memory cells

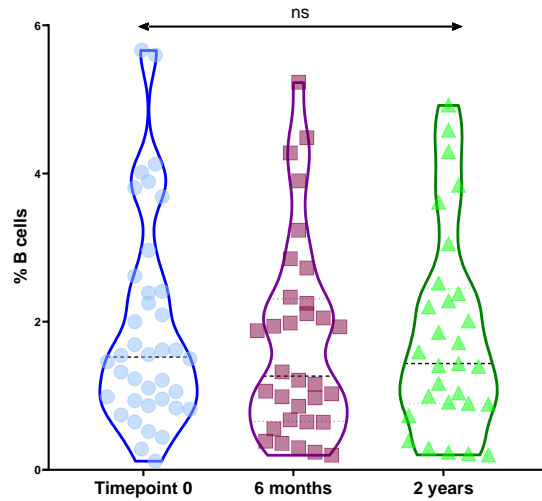


Double Negative

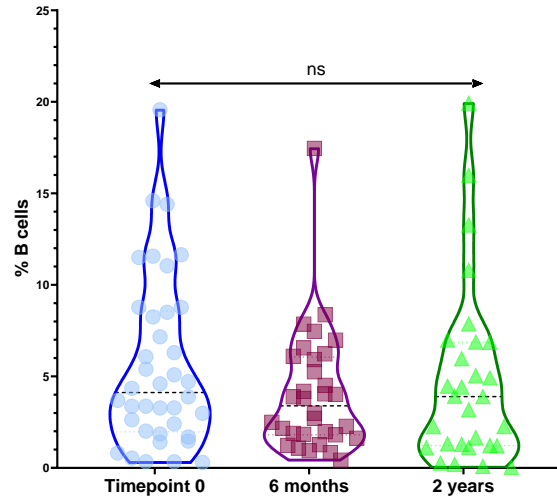


Sjogren Syndrome

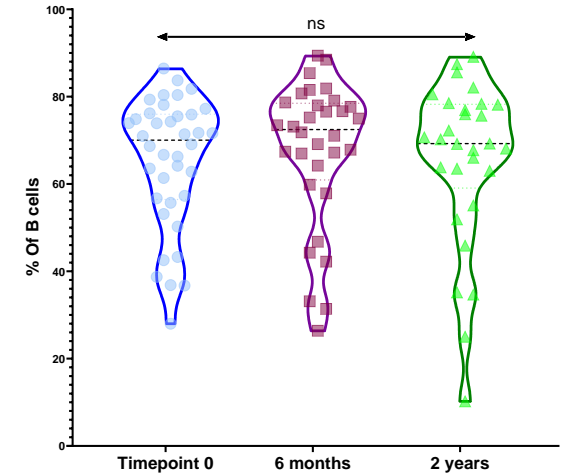
Plasmablasts



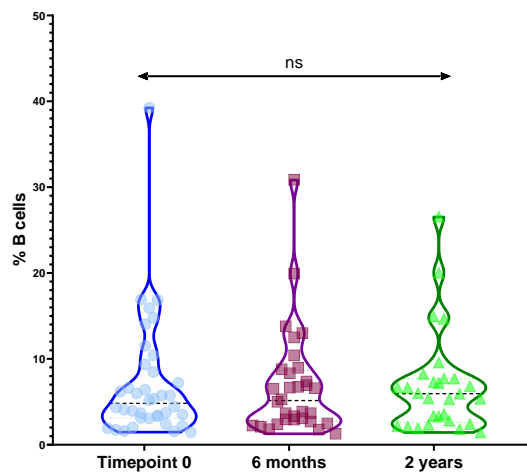
Transitional



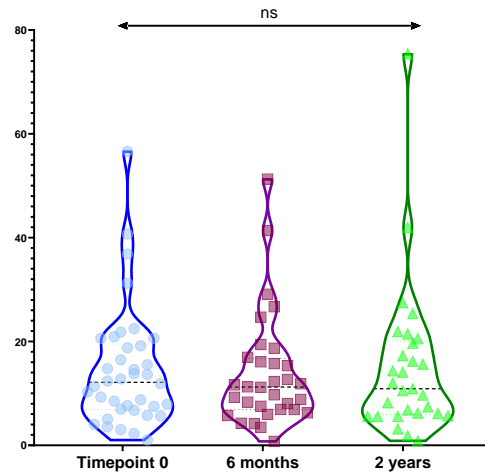
Naive



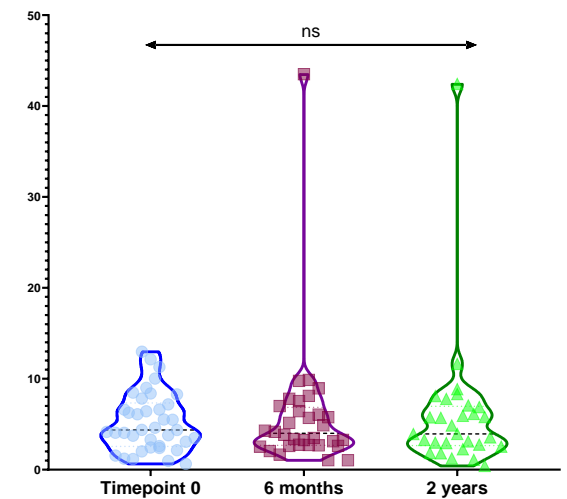
Unswitched Memory cells



Switched Memory cells



Double negative



Οι κύριοι υποπληθυσμοί των B λεμφοκυττάρων δεν μεταβάλλονται με το χρόνο (ενδεικτικά στο σύνδρομο Sjogren) ⁹

CD5+ B cells

